



Technologies Solutions Group at a Glance

Technologies Solutions Group (TSG) is a privately held company with a targeted, diversified, and strategic portfolio revolving around supply chain and work-flow automation products. TSG develops and produces proprietary risk management devices and operating suite workflow software targeting the needs of various industries, including the healthcare industry.

TSG’s executive team has an average of 30 years of experience in AIDC/RFID. We offer an array of emerging proprietary medical products , key patents, and trademarks defining our company as a leader in healthcare automation plus a solid background in AIDC for various industries.

Our Success

The core of our success and industry leadership is not only the quality of our products and services, but our elite partnership with all major industry experts which provide access to special programs, insider knowledge, and expert support. As a full solution provider, TSG is committed to offering end-to-end solutions for our client operations and workflow procedures. TSG offers programming services, engineering, product development, sales, service, and marketing under one roof. We can design, develop,,and manage your project from start to finish.

Table of Contents

Why TSG	3
Industries Served	4
Professional Services	5
System Development and Custom Applications	6
Mobile Computers	7
Mobile Computers	8
Wearables	9
Barcode Scanners and Verifiers	10
Barcode Scanners	11
Mobile Device Monitoring	12
Direct Thermal and Thermal Transfer Printers	13
Color Printers	14
Label Products	15
Barcode Software/ERP Integration	16
Rack Labeling and Signs	17
Thermal Transfer Ribbons	18
Print Engines	19
RFID	20
Power Carts	21

Why Technologies Solutions Group?



Healthcare Products

Healthcare's specific requirements are not included in the standard AIDC products. TSG caters to the unique healthcare workflows and patient safety.

Scanners

Integrated scanners for multiple platforms: 1D, 2D, LF, HF, UHF tethered or component level with anti-microbial and detergent ready options for healthcare environments. We will optimize scanners to meet performance needs based on application requirements.

Printers

Direct thermal and thermal printers are smaller with better features for healthcare industries. Anti-microbial, RFID, and high density printing are just a few key features now offered.

Monitors

Our monitors make infection control easier! Fixed stations and medcarts have anti-microbial and detergent coatings.

VISI-Sponge

Our complete network-based system allows hospitals to easily track surgical tools using RFID, font recognition, body detection, and data entry in real-time. VISI-Sponge data collection provides valuable reports for your organization.

VeRXify

Our optical sensor system monitors entry/exit of a hospital room plus WHO hand hygiene compliance 24/7. All collected data is stored for compliance reporting and training.

SaniTrack

Our customizable RFID hand hygiene, wall-mount sanitizer system tracks and stores all hand hygiene activity data in the room per WHO safety guidelines.

Steramist

TSG utilizes Steramist for pharmacy and clean room decontamination since 2014. Our safe H1N1 formula guarantees a six log kill on most surfaces. Steramist also decontaminates healthcare masks at our facility with software for tracking collection and distribution of decontaminated masks for healthcare employees. TSG will provide barcodes for your masks if you decide to use your existing tracking system.

Custom Software

Most hardware and consumable offerings are mostly driven through available software options. TSG's skilled systems analysts will develop a system to meet your business needs for existing applications/systems, Android applications, and other portable terminals.

Excellent Service and Support

"We support everything we sell" is Technologies Solutions Group motto. Our belief is each product needs to include support, integration, and training from installation to answering questions and eliminating your concerns. Our services include design, development, installing, remote support, troubleshooting, and manufacturer support.



VISI-Sponge



SANI-TRACK
RFID Hygiene Verification and Reporting System



SteraMist
Environment System

“Efficiencies in motion.” We live and breathe our motto every day. As workflow, automation, and efficiency experts, we strive to enhance your business processes from the technology side to incorporating lean principles and protocols for optimal solutions. Moving and tracking products at every level and as seamlessly as possible is one of our major goals.



Food and beverage companies need to be able to distribute and deliver their products as efficiently as possible through supply chain due to shrinking margins. Advancements in printing and scanning technologies has made this possible.

As the cannabis, hemp, THC, and CFP markets evolve, so does the need to enhance high definition color printing, packaging, and scanning. We provide powerful solutions not only in this area but also products to enhance plant growth for quicker turn rates and less waste.



The chemical industry (pharma, hazardous waste, manufacturing) constantly changes it’s rules and regulations creating obsolescence and waste. TSG develops programs to eliminate this money and resource waste.

Food manufacturing has changed quite a bit in recent years with quality standards increasing to offset liability costs. TSG developed a product for logistics, supply chain, and hand hygiene monitoring with workflow to ensure higher safety measures.



Warehousing is the oldest and steadiest applications using AIDC equipment. From WMS to printing applications, TSG has fulfilled literally every application a warehouse has called for. Rack labeling, signage, print and apply, conveyor scanning, and mobile terminals are just a few of the applications we have addressed.

Route management provides efficient deliveries and customer service. TSG deploys systems to track vehicles, monitor shipments, and alert customers in real time. Route management paired with labeling, packaging, and shipping subsystems provides an optimal solution for any carrier.



The Internet of Things (IoT), connects the smallest device to your network infrastructure for a variety of reasons. Remote monitoring is a big part of TSG’s mandate. Let us show you how to do it!

TSG works with medical supply companies and medical distributors developing challenge applications for pharma and medical manufacturing. TSG has a variety of solutions to fit your needs.



Working with government accounts creates many challenges, but in many ways the government needs exactly what the commercial sector dictates. TSG works with many government agencies and over many years we provided solutions on a global scale.

For more information visit www.t-sgrp.com



For the most current and up to date information, be sure to visit our website at: www.t-sgrp.com





Technologies Solutions Group offers a full suite of professional services designed to remove the heavy lifting off the customer and provide superior automation to increase your ROI. Whichever professional service you choose, TSG will do as much or as little as you designate for a hassle-free process.

Break-Fix

TSG's most basic service plan is break-fix support, which allows the customer to ship broken equipment or devices for repairs.

If customers find that equipment is not working, they can contact TSG and ship the items in question for repairs. The equipment is repaired in a timely manner and shipped back to the customer. Break-fix support provides companies with a reliable cost-effective method of device repair as well as a feeling of comfort knowing TSG's experienced repair team is on the job.

Consulting

TSG has more than 30 years of industry expertise to provide consultations for businesses and insight on barcode, labeling, and printing solutions.

Whether your business is in need of barcode, labeling, and printing solutions as well as terminals, wireless infrastructure, and database design/data mapping from an ERP to an application, TSG can be your solution.

Our experienced systems analysts have been tried and tested countless times, making them the best in the industry. If you would like to schedule a consultation, contact us today at 443-542-5546.

Process Flow/Application Scope and Development

An assessment of this type maps out devices, databases, systems, and more in order to identify an organization's most critical assets.

This process greatly improves the efficiency of processes and leads to a more organized enterprise. TSG's dedicated team members conduct thorough asset inspections to ensure that each customer can meet, and surpass, their business goals.

Wireless Site Survey

TSG leverages a tested and proven process to offer comprehensive site surveys and infrastructure planning.

This process begins with a needs analysis, which is an initial assessment of your budget, RFID compliance mandates, compliance goals, and any other factors unique to your company. The next steps include a preliminary site survey to gain an understanding of the IT infrastructure and manufacturing processes followed by the wireless architecture and physical installation. TSG offers training from a team member that is familiar with all aspects of wireless networking.

Package/Label Design and Compliance

TSG develops custom applications to meet unique business needs and any industry/environment requirements, including GHS, UL/CSA, and customer compliance requirements.

By employing a variety of printing techniques, TSG can ensure that any size or decoration requirements are met. To support these printing technologies, TSG has a dedicated and experienced team eager to understand your package or label compliance needs.

Inventory Programs

TSG can house inventory for businesses with high volume supply orders so they can have their labels when they need them.



Systems Development and Custom Applications



Consultation

Our free consultation will help you assess your business's application requirements. We'll help you outline a path to your goals, determining the time frame and resources necessary.

Quality

We always ensure our solutions are top quality. We complete a thorough in-house review, including focus group testing.

Mobile Strategy and UI Design

If an app isn't easy to use, it won't matter how powerful it is. We'll help you design a user interface that's simple, sleek and intuitive.

Application Release/Deployment

We have the know-how to get your apps deployed—whether you want us to install the applications directly on your devices, teach you how to install them yourself, or load the software to app marketplaces for install later.



At TSG, we are systems analysts specializing in workflow optimization. TSG analyzes every variable within the workflow process in order to design a custom solution that will optimize efficiencies on every level. Software is a large factor of the development process and includes user interaction and application peripherals.

Development Expertise

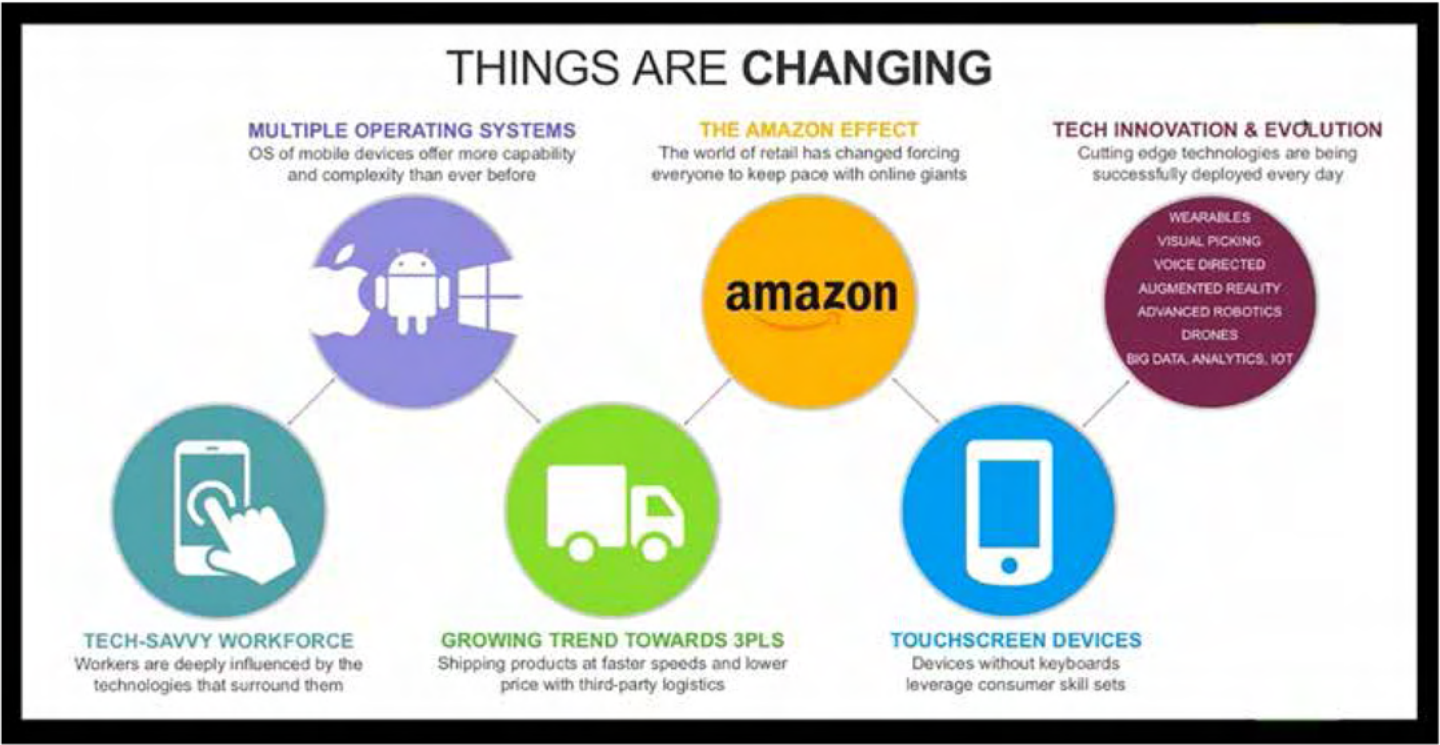
Our designers and programmers know HTML5 and responsive design, Javascript, AJAX, JSON, XML, C++, C#, Objective C, PHP, VB, MySQL, SQL Server, iOS, Android, Windows Mobile, Windows CE, responsive frameworks, mobile frameworks and more.

Maintenance

We provide maintenance packages for both hardware and software, so you always have the most up-to-date solutions.

Remote Monitoring

TSG offers remote monitoring tools for the customer with training. If you prefer, TSG provide all the support, monitoring, and service remotely



Mobile Computers



Mobile Terminals and Computers

Mobile computers and terminals are a vital component of any wireless infrastructure because their mobility and ruggedness allow them to be taken wherever employees need to go.

They are also ideal for collecting data, accessing customer information, and completing business transactions at the point of activity. Imprint Enterprises' experts can recommend the right barcode terminal or scanner for your application and environment. Our line of rugged mobile computers includes traditional keypad handheld computers, rugged tablets, wearable computers, wireless Android devices, and vehicle-mount devices.



Zebra MC9300 and MC3300

Handheld Terminals

Our selection of leading handheld devices includes Motorola's MT2000 series batch computers, Honeywell Dolphin series computers, Zebra MC3300, MC65, MC75, MC-9000 series, and many others. These standard data collection terminals feature a variety of keypad configurations, support for multiple wireless technologies, barcode scanning and RFID capabilities, and other features.



Honeywell Thor VM3

Vehicle-Mount Terminals

We also offer an equally diverse selection of wireless and batch vehicle-mount computers, including popular lines like Honeywell's Marathon, VX, and Thor series, and Zebra's VC70, VC80x, VC8300 & VH10 devices. The rugged computers are available in full-screen and half-screen configurations, come with support for multiple operating systems (Win CE, Win 7), and offer a variety of mounting options. Imprint also provides mobile device management software for centralized support, along with full service and repair (both on-site and depot) for the computers.



Honeywell CK65

Industrial Rugged Computers

For the most extreme operating environments, we provide rugged terminals that are Intrinsically Safe (I-Safe) and rated IP 65/67 for resistance to damage from dust and moisture. We also offer devices specifically designed for cold chain and freezer operations (with some models built to operate in temperatures below -22°F) and for applications in which workers move between cold and warm environments. Our industrial rugged computer offerings include Honeywell's CK65 and CN80 as well as the Zebra MC3300 and MC9300.



Zebra TC8300

Innovative Technology

The TC8300 Touch Mobile Computer from Zebra Technologies is the most efficient and feature-rich mobile computer in the industry. Designed to be lighter and more ergonomic than other mobile computers, the TC8300 helps make workers 14% more productive. This mobile computer features a touchscreen with customizable keyboards, voice interaction, and hands-free proximity scanning, so worker efficiency is maximized. With an IP65 rating, the TC8300 offers the durability customers expect from a Zebra device.

Mobile Computers

Mobile terminals and computers are more important than ever before for enterprises. Although many manufacturers have made great strides in mobile technology, here are a select few that stand out.



ZEBRA

Rugged — Zebra MC9300

- IP67 and IP65: virtually water and dust-proof
- Corning Gorilla Glass: maximum scratch-and-shatter resistance
- Supports TE apps out of the box for easy migration to modern, touch-based apps
- 7000 mAh battery doubles runtime of the MC9200



ZEBRA

Vehicle-Mount — Zebra VC8300

- Backwards compatible for cost-effective upgrades
- Large 8" color display
- 8-core processor
- Bluetooth 5.0
- IP66 rating
- Android OS



Honeywell

Vehicle-Mount — Honeywell Thor VM1A

- Field-replaceable front panel for easy service
- Quick Mount Smart Dock for vehicle changes in 1/6 the normal time
- Optional screen blanking to ensure maximum driving safety
- Heavy-duty construction with an IP66 sealing rating



Honeywell

Vehicle-Mount — Honeywell Thor VM2

- 9.7 inch XGA display screen
- WLAN and WWAN connectivity
- Available with wide range of Windows platforms
- Field replaceable front panel for easy service



Support for OS Migration

As the popularity of the Android operating system grows, more businesses are considering migrating to Android for their mobile deployments. Imprint Enterprises offers solutions through our partnership with Zebra Technologies that make the migration to a new OS easy and more manageable.

Mobility Extensions (Mx)

Mobility Extensions adds robust security, mobile device management, mobile application management, data capture support, and business-class Wi-Fi to Android devices to make them enterprise ready.

Mobility DNA

Mobility DNA software transforms Android to make it easier for enterprises to manage, integrate, and leverage for greater productivity. Training is quicker and easier for new employees, and communication and collaboration are streamlined. Mobility DNA also enables you to troubleshoot and correct mobility issues more quickly to avoid downtime.

Lifeguard

A part of Zebra's Mobility DNA solution, Lifeguard is Zebra's software security solution for Android. It extends the lifecycle of consumer OS support beyond the typical 36 months to allow you to use them longer and significantly lower the total cost of ownership (TCO) of your mobility deployment. Lifeguard provides periodic security updates and OS security support as you transition to a newer OS.

Wearables



Zebra's robust wearable solutions are purpose-built for the enterprise. From our Android wearable mobile computers with built-in intelligence for superior manageability to our diverse ring scanners that deliver unrivaled scan performance, these solutions give your front-line workforce the performance edge they need.



Zebra RD5100

The RD5100 is Zebra's most rugged ring scanner, for reliable data collection inside, on the dock, or in the freezer.

- Instant pairing with mobile computer
- Right- or left-hand operation
- Triggerless scanning
- Comfortable, hygienic mount
- High-performance battery



Zebra WT6000

The Zebra WT6000 allows for maximum comfort while achieving maximum operational efficiency.

- Multi-modal picking
- Sorting
- Loading
- eCommerce picking
- Voice picking



Zebra TC52

The ultimate in rugged touch computing inside the four walls and outside.

- Large 5 inch HD display
- Advanced higher-resolution touchscreen
- Advanced scan engine for quick data capture
- Rugged impact protections

**Improve productivity and task accuracy
with hands-free directed-action workflows.**



Proglove

Proglove helps you maximize productivity in production. It connects to smart-phones, tablets or terminals via Bluetooth Low Energy (BLE) in an instant.

- Optical, acoustical and haptic feedback option
- Optimized for a high frequency scanning environment
- Battery life of up to 8 hours

The benefits of MARK 2 include:

- Optimized for high frequency scanning
- Extended battery life of up to 16 hours



Honeywell 8680i Ring Scanner

The 8680i Wearable Mini Mobile Computer is Honeywell's most advanced compact, ergonomic, high-performance Bluetooth®- wearable scanning solution worn on one hand and designed to help businesses streamline high-volume workflows such as picking, sorting, putaway, and packing for increased speed and efficiency with every transaction.

- **Improved efficiency** – hands-free technology allows workers to effectively multi-task.
- **Ergonomic design** – low profile and light weight minimize the risk of injury from repetitive motion.
- **Safety** – hands-free devices minimize the risk of injury due to workers picking heavy objects with one hand



Honeywell Dolphin CT40



Honeywell Dolphin CT60

Honeywell CT40/CT60 Wearable Terminal

The Dolphin™ CT40 and CT60 are the latest in handheld computer technology from Honeywell. Built on the Mobility Edge Platform™, and compatible with the last five Android generations, starting with 7.1(N), the CT40 and CT60 allow companies to test and validate applications once, accelerate enterprise-wide deployment, optimize device performance, simplify maintenance and extend the product lifecycle.

These handheld computers include:

- The latest Android™ or Windows® operating system technology
- Our SmartSystems™ device management software
- Superior industrial design and ruggedness

Barcode Scanners & Verifiers

Enterprise mobility is rooted in the ability to capture data in real time. However, lab applications are much different than warehouse applications. The ability to scan very high density barcodes to 100 mil retroreflective stock takes expertise to specify the proper equipment, optics, barcode mil specs, materials, and the variables associated with scanning. This is where TSG excels.



Handheld — Honeywell Granit 1911i

This IP65-rated device offers best-in-class durability, decreasing repair costs and maximizing uptime.

- Bluetooth connectivity allows the Granit 1911i to operate up to 100 m from base while also reducing interference with separate wireless systems.
- The lithium-ion battery is easily removable, and a full charge allows the device to perform up to 50,000 scans.
- Easily scan items that are out of reach and scan 20 mil linear codes from a distance of 75 cm without any impact on accuracy



Handheld — Zebra DS3678

- Aggressively scans high-density barcodes and is compact enough to fit in almost any enclosure in a variety of environments.
- The built-in diagnostic indicator greatly reduces downtime by offering intuitive troubleshooting.
- Can be configured and upgraded remotely, eliminating the expenses associated with on-site service.
- Powered through serial and USB ports, so there are fewer cables to clutter a workspace.



Verification — Cognex DataMan 8600

- Designed to perform in a variety of environments, including even the harshest of factory floors.
- A cutting-edge liquid lens imaging system and flexible lighting technology make the DataMan 8600 ideal for DPM applications.
- Designed to support a variety of applications – corded or cordless – to meet any communication requirements.
- Robust barcode reading technology allows the DataMan 8600 to read codes regardless of damage, perspective, distortion, contrast, or obstruction.



Verification — Honeywell PX940

- Industrial printer and barcode verifier combined into one device, produces defect-free barcodes with 100% accuracy every time.
- One-step process
- Reduced costs
- Better compliance
- Accessible records

Industry-leading Barcode Verifiers



Inspector Model D4000

RJS Technologies, Inc. Inspector series portable barcode verifiers are accurate, repeatable devices that are used world-wide to ensure barcodes will work throughout the supply chain. Simple, reliable tools that can handle the stress of an industrial environment for many years are a few of the hallmarks of the Inspector series.



QuickScan QD2500 imager

The new QuickScan QD2500 imager from Datalogic is an entry level 2D corded handheld scanner that punches well above its weight when it comes to performance. It is the robust and reliable companion in the retail sector for your POS checkout, built for many years of continued service. It effortlessly reads a full range of barcodes, be they damaged, hard to read, or poorly printed. In addition, with today's COVID-19 safeguards in place, the QD2500 imager is optimized to seamlessly read through plexiglass barriers. All of these must-have benefuts are available at an incredibly affordable price, making the QuickScan QD2500 imager the latest and most desirable addition to the Datalogic family of renowned handheld barcode scanners.





1D and 2D Bar code Scanners

True enterprise mobility starts with capturing data in real time, at the point of business activity, with accurate and reliable barcode scanning hardware.

Barcode scanners have undergone a tremendous evolution over the past decade. Scanners are no longer a “one size fits all” solution; a wide range of both laser and imaging scanners are available for reading an array of 1D and 2D barcodes in retail, warehouse, delivery, healthcare, sales, and other applications. Imprint Enterprises offers the industry’s most robust and innovative line of handheld, fixed-mount, and machine vision 1D and 2D barcode scanners that can help you improve efficiency, save time, and minimize errors in any environment.



Honeywell
Honeywell Granit 1911i

Handheld Scanners

Handheld barcode scanners are a critical component of any automatic data collection solution. Imprint’s selection of handheld barcode scanners includes both wired and wireless devices that can provide standard range, near-range, and long-range scanning capabilities.



Cognex advanced machine vision & industrial barcode reader systems deliver instant improvements to any manufacturing process, enabling products to be made at higher speed, without defects and at lower cost.

Fixed-Mount Barcode Readers

Cognex DataMan fixed-mount barcode readers offer unmatched 1D and 2D code reading performance. Advanced technology, processing power, modularity, and ease of use make DataMan barcode readers the ideal solution for challenging manufacturing and logistics applications.



DataMan 150/260 Series



In-Sight 2000 Vision Sensor

Vision Sensors

Cognex In-Sight 2D machine vision systems are unmatched in their ability to inspect, identify and guide parts. These self-contained, industrial-grade vision systems combine a library of advanced vision tools with high-speed image acquisition and processing. A wide range of models, including line scan and color systems, meet most price and performance requirements.



DataMan 8072V Series

Barcode Verifiers

Barcode verification is the process of grading the quality of 1D, 2D, and direct part mark (DPM) codes. An increasing number of regulated industries require barcode verification. Barcode verifiers provide guidance through the marking process to create codes which meet minimum quality standards. Cognex barcode verifiers use high quality optics, advanced algorithms, and simple software to demonstrate compliance to industry standard guidelines.

Mobile Device Monitoring

SOTI ONE

- A global leader in mobility and IoT solutions for businesses with over 17,000 enterprise customers worldwide.
- A pioneer in EMM with over 20 years of experience in securing and managing business-critical mobility.
- Among Deloitte's Technology Fast 500 for North America 2017.
- PC Mag's Editors' Choice for EMM solutions for two consecutive years.



- The top-ranked EMM vendor for special purpose and rugged devices – 2017 Gartner Critical Capabilities for EMM Suites.
- A leader managing ruggedized/IoT devices – 2017 IDC MarketScape for EMM software.
- A proven leader in the EMM Market according to OVUM and the Radicati Group.
- More than just EMM. SOTI ONE reduces cost, complexity, and downtime of business-critical mobility.

Avalanche

The supply chain gets more competitive all the time, and the demands on your business keep increasing. Ensuring your workers can maximize productivity is more important than ever. You're pressured to achieve improvements in operational productivity year after year. Do your mobile workers have what they need to get more done? Ivanti® Avalanche, powered by Wavelink, is a proven solution from a trusted partner that generates results for some of the largest, most demanding supply chain enterprises in the world.



- Powerful Control of Your Devices
- Full Management of Devices and Apps
- Lock Down Devices into Single Apps
- Update Devices on Your Schedule
- Deploy Apps Faster
- Secure Content in Work Profiles
- Manage Segmented Workgroups Easily



General Features

- StayLinked eliminates dropped telnet sessions
- Supports IBM 5250/3270, VT220/100/420/52 and SSHv2 terminal emulation
- StayLinked Thin Clients are available for a wide range of popular wireless devices from Apple, Android, Honeywell, Symbol/Motorola, Intermec, LXE, Datalogic, Psion, and others – virtually any mobile device.
- StayLinked Host API for dynamic seamless integration with host screen applications



SmartTE

SmartTE provides a way to take advantage of today's modern touchscreen devices with Terminal Emulation by transforming "green screen" application screens into easy-to-use, graphical screens with no changes to the underlying enterprise applications.

With StayLinked SmartTE you get the best of both worlds with No-Risk Application Modernization. You continue to realize the speed, reliability, and security of StayLinked TE while increasing productivity and usability with the addition of an intuitive, modern user experience.



Velocity

With Ivanti® Velocity, powered by Wavelink, you can bring your existing telnet apps to Android—starting in their existing "green screen" form—and then optimize, modernize, and voice-enable these apps in four easy steps. Your workers have time to adjust to new hardware, then gain a fully modernized user experience and workflows optimized to streamline their tasks.

- Maintain Your Host System
- App Modernization Made Easy
- Increase Accuracy and Speed
- Optimize Task Workflows
- Session Persistence
- Voice-Enable Your Apps
- Minimize Risk in Your Android Migration
- You Set the Pace of Migration
- Break Free from Keyboard-based Devices



Direct Thermal and Thermal Transfer Printers



Honeywell PX940

This first-of-its-kind industrial printer and barcode verifier combined into one device, produces defect-free barcodes with 100% accuracy every time. Always striving for ease-of-use, Honeywell crafted the PX940 to be quick to set up, simple to use, and easy to maintain.

- One-step process
- Reduced costs
- Better compliance
- Accessible records

Honeywell

EPSON

ColorWorks® CW-C6500A

Epson CW-6500A 8" Color Label Printer with Auto-cutter print labels on demand while offering cost and inventory reduction compared to pre-printed labels. The C6500 prints color labels from 1" up to 8.5" wide. It is ideal for printing 6" color labels, 8" chemical drum GHS labels, and 2-up color labels.

- Reliable performance
- Fast time to first label
- Seamless integration
- Astounding image quality

SATO

SATO CL4NxEpson

These flexible printers are a good fit for a wide range of industrial applications as they have been developed with a focus on easy and convenient operation and high reliability.

- Fast, reliable printing
- Compact design
- Easy operation
- High quality label printing



TSG offers a wide range of barcode printers for every application. Leading manufacturers like Zebra, SATO, and Honeywell stand out to address every verticle market need.



SATO SG-112-EX Printer

- Automatic label loading
- Flexible connectivity
- 10.5 inch print width
- Fast and consistent throughput



SATO PV3 Mobile Printer

- Built-in label dispenser
- Fast print speeds up to 5ips
- Easy printer setup
- NFC pairing for Bluetooth connectivity



SATO FX3 Stand Alone Printer

- 7 inch full color touchscreen
- Wireless connectivity
- Long lasting battery for hours of mobile use
- Easily connects to multiple devices for data entry accuracy



SATO CT4LX/HC Printer

- Clinical-ready antimicrobial plastic casing
- Disinfectant wipe-down ready
- Full color touch display
- Multiple connectivity options



SATO LP100-R Printer

- High performance laser imaging
- Superior print quality
- Remote access/management
- Interactive color touchscreen

Color printing allows for real time printing and emulation of historically pr-printed material. No more out-dated pre-printed stock and increased cost savings. TSG will review your application and provide the best color printing options for optimal ROI.



Chemical/GHS

We offer a combination of color printers and labels that allow customers to efficiently create durable GHS labels.



Food

Whether you are in need of custom food labels, ingredient labels, or nutritional labels, Imprint Enterprises has the color printing expertise to deliver the perfect solution.



Healthcare

Using color in prescription labeling, infusion, wristbands, and lab labeling allows for differentiation and highlighting key information.



Retail

Epson color printers produce cost effective media without having to pre-print stock. Reduced lead times allows for faster price changes for faster sales.

TSG partners with Epson to offer efficient, reliable, and rugged industrial color printing solutions. Epson’s state-of-the-art printers enable you to eliminate two-step printing processes and preprinted label stock, while enabling you to easily comply with regulatory or industry label requirements. These solutions come equipped with easy-to-use Wasatch SoftRIP Label Edition software for precise color matching.



Epson C6000

Print-and-apply labels from sizes ranging from 1.0"-4.4" wide

- One-step process
- Reduced costs
- Better compliance
- Accessible records



Epson C6500

Print-and-apply labels from sizes ranging from 1.0"-8.5" wide

- Prints full-color, high-volume labels
- Perfect industrial printer
- Monochrome and full CMYK color printing
- Remote printer management



Epson C7500

Best in class endurance and dependability for color label printing

- Rugged design is ideal for extreme environments
- Prints durable labels that won't fade or smear
- Integrates seamlessly into existing workflow
- Minimizes user intervention and waste



Epson C3500

Low cost, full process color printing

- Ideal for trade show badges
- Auto cutter included
- Easy loading and handling

Label Lines

Barcode Labels

Our stock barcode labels are available using a variety of barcode labeling technologies. Choose the solution that's right for your application.

Custom Labels

- Asset tags and labels
- Sequentially numbered/barcoded
- Durable materials
- Tamper proof
- Available in up to ten color printing
- Process color
- Comprehensive list of materials, sizes, symbologies and colors
- Custom barcode labels can be tailored to any application

Regulatory Labels

TSG will help you meet the labeling regulations of your industry including:

- USDA
- GHS Solutions
- UDI Labels
- UL/CSA

No one manufacturer is all things to all people. TSG has contracted with a wide variety of manufacturers who specialize in various areas. From large volume manufacturing and fulfillment to small runs of barcoded rack labels TSG has you covered.



TSG's stock barcode labels are available and ready to ship to meet your traceability needs.

- Perfect for warehouse settings and large industrial facilities, such as chemical, food, medical, beverage, pharmaceutical
- Available in variety of sizes, colors, and material types
- Over 750 different types available from industry leaders
 - Thermal transfer
 - Direct thermal
 - Synthetic
 - RFID

• Certified Zebra™ Supplies

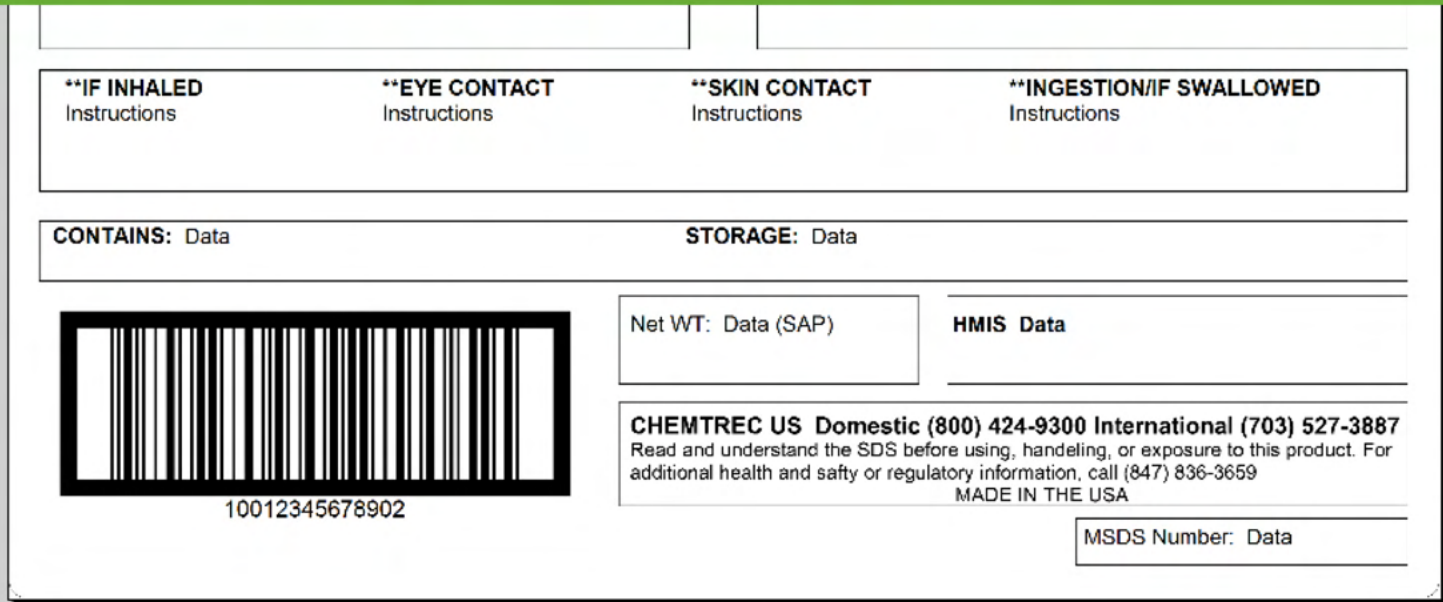
• Datamax™

• Intermec™

• SATO™

• Genuine Checkpoint and
Sensormatic





TSG offers industry-leading barcode software and automation solutions, as well as installation and custom integration services, that can meet your unique business needs. Our partnerships with leading barcode label software companies allow us to provide best-in-class label generation and automated label printing solutions for any size business.

Our Label Generation Software Company Partners

- BarTender™
- NiceLabel™

The Benefits of Barcode Label Software

- Built-in templates to enable quick custom label, tag, badge and coupon creation
- Continued serial number feature that automatically tracks and prevents gaps and errors
- Elimination of manual processes and options for integration with your product database

Integrate with Your Existing ERP Software

Barcode ERP integrations links printer operations with other supply chain management and ERP solutions to improve efficiency across your operations. TSG’s barcode label printing solutions are compatible with most ERP software providers for a total solution to fit your business.

TSG offers businesses industry-leading barcode software and automation solutions that improve productivity and increase efficiency. Let us assist you in deploying your next application. With over 30 years of experience, our team of experts can design a custom application that fits your business requirements.

Integrated Label Printing

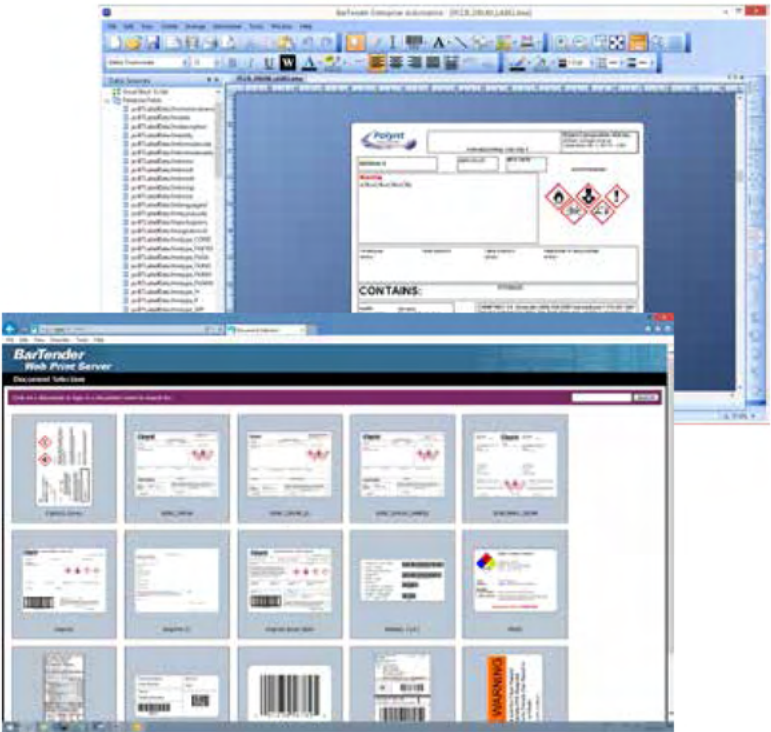
Integrate label printing operations with your supply chain management or ERP solution to improve efficiency, accuracy, and reliability.

Barcode & Automation Software

Industry-leading barcode software and automation solutions designed to meet the needs of any business.

Label Printing Automation

Label printing automation solutions that greatly improve the efficiency of an enterprise's operations.



NiceLabel

Professional barcode label design and printing software that also supports thermal transfer printers, databases and offers open connectivity.



BarTender

Software from Seagull Scientific that helps organizations create/automate barcodes, RFID tags, labels, and more to improve efficiency and security.

Rack Labeling and Signs



At TSG, we know that warehouses, distribution centers, and manufacturers have high demands for clear organization and efficient labeling systems. We offer a wide range of labels and ensure that our customers receive complete, customized solutions for all of their labeling needs. From the initial consultation to the installation, TSG will work with you to create facility labels that are specifically designed to meet the needs of your business.



Warehouse Rack and Bin Labels

Whether you need cold storage rack labels, magnetic rack labels, cover-up rack labels or polyester rack labels that are longer-lasting and more durable than traditional paper rack labels, you can find what you need for your application, at a competitive price, and available for quick shipment.



Floor Labels and Kits

Our durable floor labels and kits provide safe and reliable location marking for your facility. You can place a floor label anywhere it's convenient, and changing a label is as simple as popping it out of the frame and inserting the new one.



Warehouse Magnets

TSG offers warehouse magnets for any application you can imagine. Constant label changes in your warehouse can be difficult and often leaves behind sticky remnants of the adhesive. Warehouse magnets provide a temporary or adjustable solution for your application.



Long Range Retro Reflective Labels

Long range retro reflective labels are coated with a polyester-based material, blended with microscopic glass beads that reflect the scanner's laser, much like a mirror. This reflective material enables your current scanners to reach much greater distances—as far away as 50 feet!

Warehouse Signs

TSG offers many options of warehouse signs for warehouse location and long range scanning purposes.

To keep your warehouse running at peak efficiency, you need to ensure your employees can quickly navigate your facility with highly visible signs. Whether you are in the early stages of implementing a WMS system or updating an existing facility, hanging signs can be engineered to fit your building design and improve your picking, packing, and shipping operations. TSG offers everything from warehouse aisle signs with polyester or retro-reflective labels for a professional appearance, bent warehouse signs for ultimate visibility, and flat warehouse signs as a fast, inexpensive solution. TSG guides you to a solution that works best for your facility.



Hanging Signs: For those warehouse locations that are difficult to label, such as bulk floor signs or aisle identification signs, we can custom design a hanging placard or aluminum sign that best meets your unique application.



Bent Signs: No matter what your scanning requirements are, we will assist you with a sign or label combination that will enable you to work around high ceilings, narrow aisles, and poor lighting conditions to ensure reliable data collection and tracking.

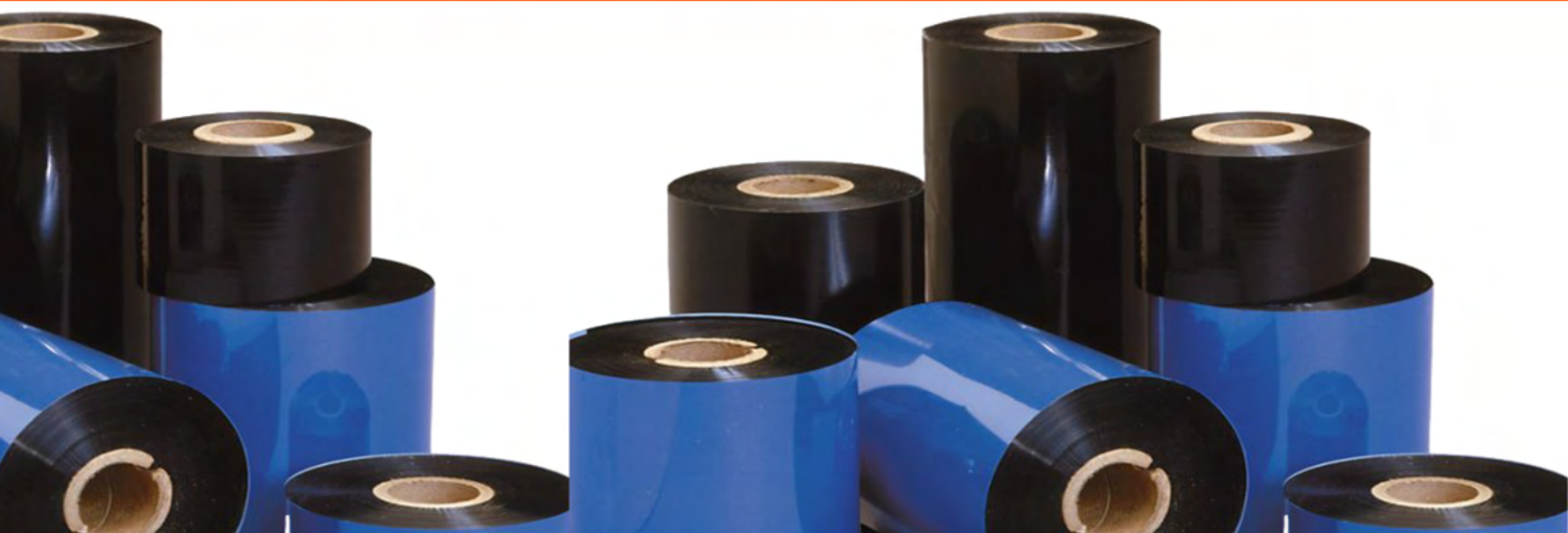


Flat Signs: Flat signs are inexpensive, easy to mount, and can be manufactured with a custom long range barcode label and delivered to your location in a short time – regardless of the desired quantity.



Aisle Signs: TSG assists with custom designed warehouse aisle signs that will set your facility apart. You can customize the right combination of polyester or retro reflective label materials, barcode type, lettering, color tabs, and mounting applications.

Thermal Transfer Ribbons



Selecting the ideal barcode supplies for your business can sometimes be overwhelming, but our customers have determined that supplies from Sony, SATO, Zebra, and limak are some of the best in the industry.

When you choose TSG for your supplies you receive:

- Expert assistance with ribbon and media selection
- Thermal transfer ribbons produced in identical, repeatable processes for high quality product standards
- Supplies produced with sustainable corporate, economic, and environmental policies
- Working with a printing supplies company with a customer satisfaction rating of 96.9%



Thermal Transfer Ribbons

- **Wax Ribbons:** Wax ribbons are ideal for a wide range of label materials, are suitable for coated and vellum papers, and tend to be the most economical solution.
- **Wax/Resin Ribbons:** Their wax/resin ribbons are ideal for premium applications because they product high-quality results, are smudge-resistant, and the backcoating tends to be extraordinary.
- **Resin Ribbons:** These resin ribbons are best utilized for the most demanding applications because they are extremely resistant to smudging, high temperatures, and solvents as well as detergents.

Our solutions are compatible with a variety of print media including:

- | | | |
|----------------|-----------------|------------------------------|
| • Coated paper | • Polyester | • Textile |
| • Vellum | • Polypropylene | • Bags or flexible packaging |

Kitting

For large run orders, we commonly seed the label boxes with the proper amount of ribbons needed to generate them. This will eliminate stockouts, consolidate inventories, and assure the right ribbon is being used for the application.

Consistently Outstanding Quality

Our ribbons are subjected to a rigorous ISO-certified quality approval process including print quality and printer wear and tear testing to ensure premium craftsmanship.

Exceptional Service

We have a wide range of ribbons sizes in stock and ready to ship at a moment's notice via our ZipShipSM (stock offering) service.

Unmatched Thermal Printing Expertise

Zebra has over three decades of experience in thermal label printer and printing supplies. We are known the world over for our exceptional quality, durability and dedication to industrial printing technologies.

We employ a dedicated R&D team just for printing supplies.

Better performance than many competitive economy ribbons

We have an entire lab exclusively focused on developing unique printing supply solutions for our customers.



- **Better contrast:** Produces blacker image.
- **Broader range of acceptable printer darkness settings:** Don't need to change printer darkness settings as the printer ages, residue builds up on printheads and when label rolls are changed.
- **Better rotated (ladder) barcode print quality:** Minimal line "raggedness" at all print speeds to ensure scannability.
- **Improved printhead life:** Less backcoating buildup on printhead, ensuring maximum printhead life.

At TSG, supporting our customers before, during, and after the sale is paramount. Our design and management team will aid you through the design and engineering phase of each project through the final system set-up and certification. From semi-automatic applications to the most demanding high speed, high accuracy labeling solutions, TSG understands your needs. More importantly, TSG understands how to convert your needs into successful production.

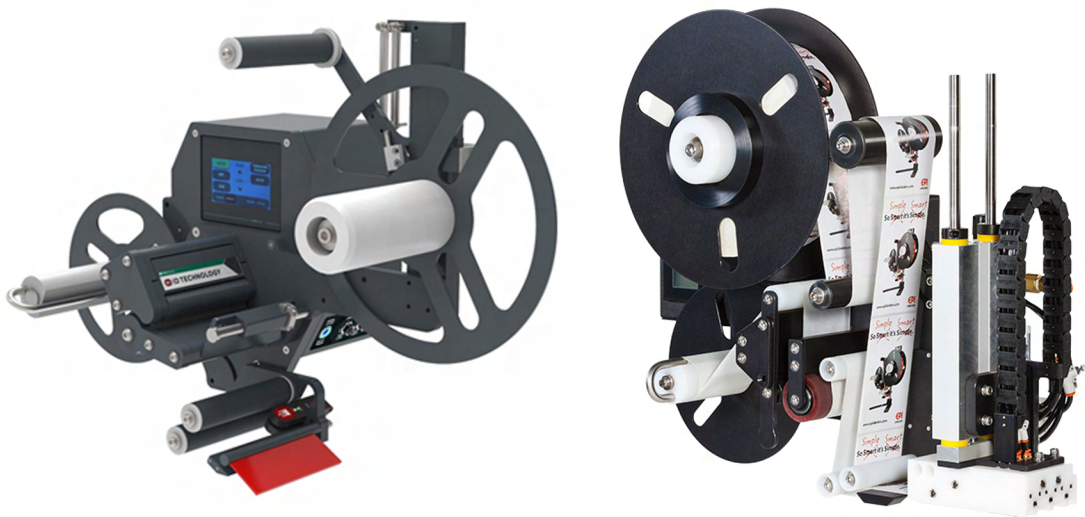
Application

Stock Systems Promach

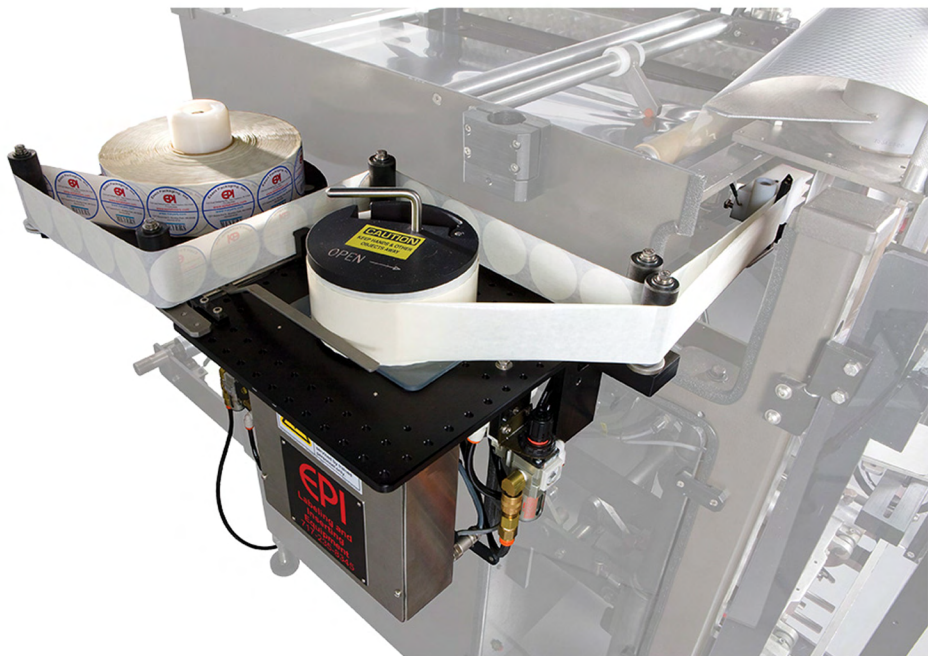
- M2 High Speed
- EPI CORE Series
- EPI Flex-Pac
- ID Tech 252

Custom Systems

- Conveying
- Application
- Diverting
- Sensors



 ID TECHNOLOGY®



TSG carefully selects print engines for our customers that rely on mission-critical print and apply operations. We partner with industry leaders to provide you with print engines that will keep your operations running with minimal downtime.

Zebra ZE500

The Zebra ZE500 was designed with customer feedback on ease of use, integration and maintenance in mind. It delivers reliable performance, even in the most demanding environments.

- Thermal transfer or direct thermal printing
- All-metal construction
- Right- or left-handed
- Applicator interface
- Compatible with RFID protocols
- Variable RFID settings to support a wide range of tags

SATO S84

The SATO S84 print engine is designed for high-volume, high-speed, 24/7 print and apply applications. It features advanced, state-of-the-art technology, but it is also easy to use and maintain.

- Multiple on-board interfaces
- Standard emulations: SZPL, SDPL, SIPL
- Multinational language support
- Two-color Status LED and LCD
- Standalone Mode Support
- Download or upload settings or data via SD or USB
- Easy Printhead and Roller Replacement
- Replace or Clean Sensor Cover without tools

Repair Services

TSG understands that print engine downtime has a cost. Trust our trained technicians to provide comprehensive service to keep your print engine maintained and to make repairs quickly and efficiently.

 ZEBRA



 SATO
DCS & Labelling Worldwide





TSG designs, develops, and supplies a wide variety of RFID products where unmanned scanning makes sense compared to conventional data collection technologies. TSG will analyze your application not only for the best RFID offering commensurate with the application, but also putting together a comparison to traditional technologies such as barcode and vision systems.



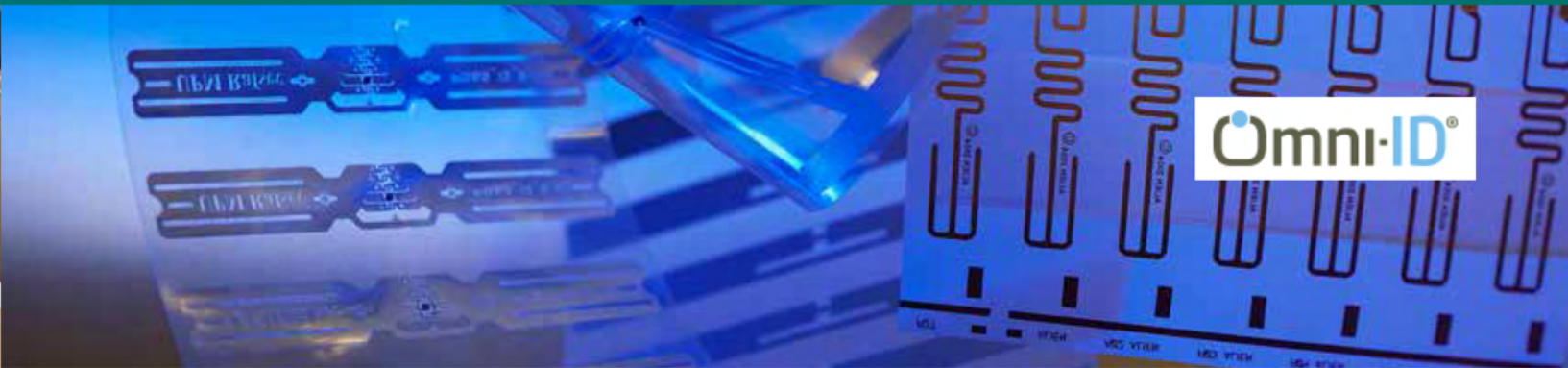
RFID Readers

We partner with leading providers such as Zebra Technologies, Impinj, and SATO to offer a full line of RFID readers that accommodate data collection from a variety of distances. LF, HF, and UHF are typical frequency offerings. Choose from handheld and fixed readers for both mobile and conveyor applications.



RFID Printers

RFID printers allow you to print and encode RFID tags to help track assets or manage your supply chain, warehouse, or yard. RFID printers are designed to accommodate media commonly used for RFID labels and tags- and to accommodate high-speed, high-volume use. Our systems analysts can advise you on the best value and performance options for your company.



Omni-ID's Industrial RFID Tags



IQ Tags

These low-profile, printable on-metal RFID tags from Omni-ID are user-friendly, cost-effective solutions for use in metal environments such as IT asset tracking and electronics applications.

- Passive RFID
- Thermal barcode printer compatible
- Peel and stick
- Variety of sizes and read ranges
- Industry-leading performance and consistency
- IP68 rated
- For use with flat or curved surfaces



Fit Tags

Imprint Enterprises offers the full range of Fit Tags, which include the smallest, lowest profile RFID tags available. With the ability to keep performing even when exposed to extremely high temperatures, these tags are ideal for applications including hand tools and small equipment, automotive paint processes, and medical instruments that must undergo sterilization processes. Omni-ID Service Bureau can print and encode tags at point of manufacture.

- Passive RFID
- On-metal
- IP68 rated
- Withstands temperatures of up to 455° F / 235° C

Application Development

RFID relies on the marriage between the reader, antenna, environment, and tag to align broadcast distance for the optimal read. There are a lot of variables associated with designing a system which provides close to 100% scannability with no data loss. TSG specializes in designing these applications and have actually designed proprietary products specifically for healthcare niche applications.

Power Carts

Increase your overall employee and facility productivity by converting a stationary workplace to mobile without major changes to your software, infrastructure, or processes. Empower your employees to access valuable data from anywhere in the facility using mobile workstations. Imprint can customize mobile powered workstations to suit your specific needs with our growing line of modular accessories.



EC Series

The entry-level EcoCart is lightweight, compact, and ideal for powering a laptop, barcode printer, and scanner, for 8+ hours at a time.

Features include:

- Easy access power strip
- Optional pegboard organization system
- Optional slide-out keyboard tray, printer tray and scanner holder
- Adjustable middle shelf



Heavy-Duty PC Series

The PC Series mobile powered workstation has been designed to hold and power a variety of equipment, and it also provides generous space to hold inventory.

Features include:

- Rechargeable power with ability to run several devices at once for 8-12 hours of normal use
- Heavy-duty model with weight capacity of 500 lbs and plenty of shelf space for inventory
- Also available with 48" shelves
- Easily integrated with a number of optional accessories



Mid-Range NB Series

The NB Series mobile powered workstation was developed to provide true mobility anywhere in a facility.

Features include:

- Rechargeable power with ability to run 4 devices at once for 8-12 hours of normal use
- Adjust shelves in seconds on the slotted upright system
- Compatible with the Power Swap System, which offers hours of extra power with minimal downtime
- Easily integrated with a number of optional accessories

Medical Carts



Amico Hummingbird Custom CTM Cart

Amico's Hummingbird Mobile Computer Workstations facilitate access to patient medical records and medication at the point of care. Streamline workflows and processes for Caregivers, control cost, and enhance patient engagement and safety.

- Lightweight design, ergonomic handles, independent display height, and sit-to-stand adjustment provide the ultimate easy to move ergonomic workstation for enhanced caregiver efficiency.
- Minimal footprint, easy-glide casters, and cart lights enable non-disruptive mobility, day and night.
- Fully adjustable monitor and ergonomic keyboard tray adjust easily to enhance patient interaction at the bedside.
- Maximal uptime of up to 18 hours with rapid charge LiFePO4 batteries.
- Network-based fleet management provides real-time monitoring and seamless integration with existing fleet.